

# User Information

Transport rollers

Transport chassis

TR 3, TR 6, TR 20 Set

VTR 6, VTR 12

TF 3, TF 6, TF 12



TR, VTR, TF

TR, VTR, TF

## Imprint

### Produktidentifikation

Transport rollers	Item number
TR 3,	6193030
TR 6,	6193060
TR 20 Set,	6195020
VTR 6,	6192060
VTR 12	6192120

Transport chassis	Item number
TF 3,	6191030
TF 6,	6191060
TF 12	6191120

### Manufacturer

Stürmer Maschinen GmbH  
Dr.-Robert-Pfleger-Str. 26  
D-96103 Hallstadt

Fax: 0049 (0) 951 96555 - 55

E-Mail: [info@unicraft.de](mailto:info@unicraft.de)  
Internet: [www.unicraft.de](http://www.unicraft.de)

### Indication regarding the operating instructions

Original instructions

Edition: 09.04.2019  
Version: 2.02  
Language: English  
Author: MS

### Indication regarding the copyright

Copyright © 2019 Stürmer Maschinen GmbH, Hallstadt, Germany.

The contents of these operating instructions are the sole property of the company Stürmer Maschinen GmbH. Passing on as well as copying of this document, the use and distribution of its content are prohibited if not explicitly permitted. Contraventions are liable to compensation.

Subject to technical modifications and error.

## Contents

<b>1 Introduction .....</b>	<b>3</b>
1.1 Copyright .....	3
1.2 Customer service.....	3
1.3 Limitation of liability.....	3
<b>2 Safety.....</b>	<b>3</b>
2.1 Symbol explanation .....	3
2.2 Intended Use .....	4
2.3 General safety information.....	4
2.4 Personal protective equipment.....	4
2.5 Safety instructions for operating personnel .....	4
<b>3 Technical Data .....</b>	<b>5</b>
<b>4 Transport, packaging and storage .....</b>	<b>6</b>
4.1 Transport .....	6
4.2 Packaging .....	6
4.3 Storage .....	6
<b>5 Operation .....</b>	<b>6</b>
5.1 Operating conditions.....	7
<b>6 Care, maintenance and repair .....</b>	<b>7</b>
6.1 Care by cleaning.....	7
6.2 Maintenance and repair .....	7
<b>7 Check the Transport devices .....</b>	<b>7</b>
<b>8 Disposal, recycling of used devices.....</b>	<b>8</b>
8.1 Decommissioning .....	8
8.2 Disposal of lubricants / oils .....	8
<b>9 EC Declaration of Conformity .....</b>	<b>8</b>
<b>10 Spare parts.....</b>	<b>9</b>
10.1 Ordering spare parts.....	9
<b>11 Spare parts drawings.....</b>	<b>10</b>
11.1 Spare parts drawing TR 3 (above) TR 6 (below) ..	10
11.2 Spare parts drawing VTR 6 (above) VTR 12 (below).....	11
11.3 Spare parts drawing TF 3 (above), TF 6 (middle), TF 12 (below).....	12
11.4 Spare parts drawing TR 20 Set .....	13

## 1 Introduction

You have made a good choice with the purchase of the transport roller and transport chassis from Unicraft.

### **Read the operating instructions carefully before commissioning.**

This informs you about the proper commissioning, the intended use as well as the safe and efficient operation and maintenance of your transport rollers - transport chassis.

The consumer information is part of the transport rollers - transport chassis. Always keep this consumer information at the place of use of your transport device. In addition, observe the local accident prevention regulations and general safety regulations for the area of use of the transport rollers - transport chassis.

### 1.1 Copyright

The contents of these instructions are copyright. They may be used in conjunction with the operation of the device. Any application beyond those described is not permitted without the written approval of Stürmer GmbH.

For the protection of our products, we shall register trademark, patent and design rights, as this is possible in individual cases. We strongly oppose any infringement of our intellectual property.

### 1.2 Customer service

Please contact your dealer if you have questions concerning your device or if you need technical advice. They will help you with specialist information and expert advice.

#### **Germany:**

Stürmer Maschinen GmbH  
Dr.-Robert-Pfleger-Str. 26  
D-96103 Hallstadt

#### **Repair service:**

Fax: 0049 (0) 951 96555-111  
E-Mail: [service@stuermer-maschinen.de](mailto:service@stuermer-maschinen.de)

#### **Spare part orders:**

Fax: 0049 (0) 951 96555-119  
E-Mail: [ersatzteile@stuermer-maschinen.de](mailto:ersatzteile@stuermer-maschinen.de)

We are always interested in valuable experience and knowledge gained from using the application-which then could be shared and be valuable to develop our products even further.

## 1.3 Limitation of liability

All information and notes in these operating instructions were summarised while taking applicable standards and rules, the state-of-the-art technology and our long-term knowledge and experiences into consideration.

In the following cases the manufacturer is not liable for damages:

- Non-observance of the operating instructions,
- Inappropriate use
- Use of untrained staff,
- Unauthorised modifications
- Technical changes,
- Use of not allowed spare parts.

The actual scope of delivery may deviate from the explanations and presentations described here in case of special models, when using additional ordering options or due to latest technical modifications.

The obligations agreed in the delivery contract, the general terms and conditions as well as the delivery conditions of the manufacturer and the legal regulations at the time of the conclusion of the contract are applicable.

## 2 Safety

This section provides an overview of all important safety packages for the protection of operating personnel as well as for safe and fault-free operation. Other task based safety notes are included in the paragraphs of the individual phases of life.

### 2.1 Symbol explanation

#### **Safety instructions**

The safety notes in these operating instructions are highlighted by symbols. The safety notes are introduced by signal words which express the concern of the risk.



#### **DANGER!**

This combination of symbol and signal words indicates an imminently dangerous situation which may lead to death or severe injuries if they are not avoided.



#### **WARNING!**

This combination of symbol and signal words indicates a possibly dangerous situation which may lead to death or severe injuries if they are not avoided.



### CAUTION!

This combination of symbol and signal words indicates a possibly dangerous situation which may lead to minor or light injuries if they are not avoided.



### NOTE!

This combination of symbol and signal words indicates a possibly dangerous situation which may lead to property and environmental damages if they are not avoided.

## Tips and recommendations



### Tips and recommendations

This symbol highlights useful tips and recommendations as well as information for an efficient and trouble-free operation.

It is necessary to observe the safety notes written in these operating instructions in order to reduce the risk of personal injuries and damages to property.

## 2.2 Intended Use

The transport devices TR 3, TR 6, TR 20 Set, VTR 6, VTR 12, TF 3, TF 6, TF 12 are used exclusively for moving or transporting heavy objects, up to the specified Maximum load.

The transport rollers - transport trolleys may only be operated by instructed persons.

Proper use also includes compliance with all information in this Consumer Information. Any use beyond the intended use or otherwise is considered misuse. Transporting people is strictly prohibited. Use of the devices for other purposes is considered improper use.

For structural and technical changes to the transport rollers - transport undercarriages, the company Stürmer Maschinen GmbH assumes no liability.

Claims of any kind due to damage due to improper use are excluded.

## 2.3 General safety information



### NOTE!

In each case, the regulations or guidelines and standards valid in the country of use must be observed (in the currently valid version).

In Germany at the moment

Safety of industrial trucks - Hand-operated and partially manually operated industrial trucks - Part 3: Platform truck

EC Machinery Directive 2006/42 / EC

Maintenance and inspection activities may only be performed by unused and trained personnel. It is pointed out that any unauthorized modifications and changes to the devices are not permitted for safety reasons.

The operating staff must always make sure that the specified max. Carrying capacity may not be exceeded.

## 2.4 Personal protective equipment

The personal protective equipment serves to protect persons against impairments of safety and health while working. The staff member has to wear personal protective equipment while performing different tasks on and with the machine which are indicated in the individual paragraphs of these instructions.

The personal protective equipment is explained in the following paragraph:



### Safety boots

The safety boots protect the feet from being crushed, falling parts and slipping over on slippery ground.



### Protective clothes

The protective clothes are made of a tightly fitted fabric without the protruding parts of low tear strength.

## 2.5 Safety instructions for operating personnel

It is necessary to refrain from any operation that affects the safety of the Lifting rollers.

The operator must also ensure that no unauthorized persons work on the lifting rollers (for example by operating devices against unauthorized use).

The operator is obliged to inspect the Lifting rollers at least once before use (daily) for externally visible damage and defects, and to immediately report any changes (including the operating behavior) that affect the safety.

The operator must ensure that the lifting scooter is always operated in perfect condition.

If necessary, the operator must oblige the operating staff to wear protective clothing, etc.

In principle, no safety equipment may be dismantled or put out of operation, there are threats of massive crushing hazards.

### 3 Technical Data

Type	TR 3	TR 6
Load-carrying capacity	3 t	6 t
Number of rollers	4	6
Roller size	Ø 85 x 90 mm	Ø 85 x 85 mm
Dimensions	400 x 228 x 100 mm	415 x 210 x 100 mm
Weight	9,5 kg	12 kg

Type	VTR 6	VTR 12
Load-carrying capacity	6 t	12 t
Number of rollers	4	6
Roller size	Ø 85 x 90 mm	Ø 85 x 90 mm
Dimensions	320 x 268 x 110 mm	420 x 268 x 110 mm
Weight	11 kg	15 kg

Type	TF 3	TF 6	TF 12
Load-carrying capacity	3 t	6 t	12 t
Number of rollers	4	8	8
Roller size (Ø x W)	Ø 85 x 90 mm	Ø 85 x 90 mm	Ø 83 x 95 mm
Dimensions without drawbar	295 x 230 x 104 mm	640 x 534 x 115 mm	640 x 566 x 115 mm
Weight	15 kg	50 kg	66 kg

Type	TR 20 Set
Load-carrying capacity	20 t
Compensation essay	120 x 120 mm
Height	108 mm
Rollers	Ø 18 mm
Hub attachment	130 mm
Weight	ca. 50 kg

## 4 Transport, packaging and storage

### 4.1 Transport

After delivery, check the device for visible transport damage. If you discover any damage to the hanging balance, report it immediately to the transport company or dealer.



#### NOTE!

The device should be protected from humidity.

### 4.2 Packaging

All used packaging materials and packaging aids are recyclable and should be taken to a materials recycling depot to be disposed of.

The delivery packaging is made of cardboard, so please dispose carefully by having it chopped up and given to the recycling collection.

The film is made of polyethylene (PE) and the cushioned parts of polystyrene (PS). Deliver these substances to a collection point for recyclable materials or to the waste disposal company which looks after your region.

### 4.3 Storage

Lubricate the transport rollers - transport chassis and store them in a frost-free and dry environment.

## 5 Operation



#### DANGER!

#### Danger to life due to falling of the load!

Falling, slipping or overturning loads can result in serious injury or even death.

- Avoid overload! Check that the load indicated on the nameplate is the maximum load capacity does not exceed.
- Before transport, clean the transport route and remove any loose objects
- Never stay or work under a load transported by the transport wheels - transport trolleys.
- A transporting load must never be subjected to impact or shock loading.
- Make sure that the ground on which the transport wheels - transport trolleys are standing is sufficiently strong to hold the load.
- Never carry a load that may slip off, fall over, fall over, or whose components are not firmly connected to one another with the transport wheels - transport trolleys.
- Never use rusted or damaged transport wheels - use transport trolleys.
- Never leave a load transported by transport rollers - transport trolleys unattended.
- While transporting a load, make sure that the operator is out of reach of the load or hazardous area at all times.
- The transport wheels - Transport trolleys have no built-in brake: Never drive faster than 2 km / h.
- No incline or incline over 1 °.

For the transport undercarriages, it is essential to use the connecting rods (drawbar) supplied with the landing gear cassettes. Thus, the individual cassettes are performed largely parallel under the load when the ground is flat, clean and without heels

For other surfaces, it is essential that all individual suspensions and cassettes are securely connected to the cargo in a suitable manner.

**It is forbidden to position shims between the surface of the transport rollers - transport trolleys and the point of support of the load.**



**Use protective gloves!**



**Wear safety boots!**



**Wear protective clothes!**



**- NOTE!**

- The operating personnel must be familiar with the operation and functions as well as the safety regulations when operating the devices.
- The operator must provide the necessary instruction for the operating personnel.
- The transport rollers - transport chassis may only be moved horizontally. The goods to be transported must lie horizontally and in the center of the transport roller - transport chassis. It is also important to ensure that intended activities can be carried out without hindrance.

## 5.1 Operating conditions

The work area must be dry, fire and explosion proof and free from corrosive and toxic substances.

Dangerous goods such as liquid, toxic or radioactive materials may not be transported with the lifting rollers.



**NOTE!**

The operator must have a sufficient freedom of movement.

## 6 Care, maintenance and repair

### 6.1 Care by cleaning

The device must always be kept in a clean condition.



**Use protective gloves!**



**NOTE!**

Never use strong cleaning agents for any cleaning tasks. This may damage or destroy the device.

All plastic parts and painted surfaces should be cleaned with a soft, damp cloth and some neutral detergent.

Remove excess grease or spilled oil with a dry and lint-free cloth.

## 6.2 Maintenance and repair



**DANGER!**

Maintenance and repair work may only be performed by instructed persons.

If the transport devices do not work properly, contact a dealer or our customer service. The contact details can be found in chapter 1.2 Customer Service. All protective and safety equipment must be reinstalled immediately after repair and maintenance work has been completed.

Step 1: Lubricate all moving parts of the transport roller transport chassis with high quality grease.

Step 2: Check the transport rollers - transport chassis for external damage before each use.

Step 3: Make sure that all safety instructions on the transport roller / transport chassis are clearly legible.

## 7 Check the Transport devices

The transport rollers - transport chassis must be tested for operational safety by a qualified person in accordance with the provisions of the Operational Safety Ordinance and the BGR 500, Chapter 2.8, before first use and as required at intervals of no more than 1 year.

A person may be considered qualified if he / she has at least the qualification that has been previously given to the expert. The scope of the test and the periods of the examination are governed inter alia. according to the results of the risk assessment to be carried out. Type, extent and deadlines of the tests described in the BGR 500 are current practice and comply with the rules of technology.

The test is essentially a visual and functional test. It covers the examination of the condition of the components and equipment, the completeness and effectiveness of the safety equipment and the completeness of the test book. If a test period of no more than one year is adhered to, the operator can assume that this period is sufficient. Verification of transport rollers - transport chassis must be verified by a log book.



## 8 Disposal, recycling of used devices

Please take care in your own interest and in the interest of the environment that all component parts of the machine are only disposed of in the intended and permitted way.

### 8.1 Decommissioning

Immediately decommission used machines in order to avoid later misuse and endangering of the environment or of persons.

Step 1: Remove all environmentally hazardous fluids from the old unit.

Step 2: If necessary, dismantle the devices into manageable and usable assemblies and components.

Step 3: Guide the device components and operating materials to the appropriate disposal routes.

### 8.2 Disposal of lubricants / oils

Remove any escaping, used or excess oil / grease from the lubricated oil filler neck / lubrication points.

The disposal instructions for the lubricants used are provided by the lubricant manufacturer. If necessary, ask for the product-specific data sheets.

## 9 EC Declaration of Conformity

According to machine directive 2006/42/EC Annex II 1.A

**Manufacturer/distributing company:**

**Stürmer Maschinen GmbH  
Dr.-Robert-Pfleger-Str. 26  
D-96103 Hallstadt**

herewith declares that the following product

**Product group:** Unicraft® Werkstattstechnik

**Designation of the machine:** TR 3, TR 6, TR 20 Set  
VTR 6, VTR 12  
TF 3, TF 6, TF 12

**Machine type:** Transport roller  
Transport chassis  
Transport roller set

**Serial number:** \_\_\_\_\_

**Year of manufacture:** 20\_\_\_\_

comply with all the relevant provisions of the above Directive, including those applicable at the time of declaration.

**The following harmonized standards were applied:**

DIN EN 1757-3:2002

Safety of industrial trucks - Pedestrian propelled manual and semimanual trucks - Part 3: Platform trucks

**Responsible for documentation:**

Kilian Stürmer, Stürmer Maschinen GmbH,  
Dr.-Robert-Pfleger-Str. 26, D-96103 Hallstadt

Hallstadt, 14.04.2011



Kilian Stürmer  
General Manager





## 10 Spare parts



### DANGER!

#### Risk of injury due to the use of wrong spare parts!

Dangers may result for the user and damages as well as malfunctions may be caused by using wrong or damaged spare parts

- Only use original spare parts of the manufacturer or spare parts admitted by the manufacturer.
- Always contact the manufacturer in case of uncertainties.

### 10.1 Ordering spare parts



#### Tips and recommendations

The manufacturer's warranty will become null and void if non-permissible spare parts are being used

The spare parts can be obtained from the authorised dealer or directly from the manufacturer. The contact details can be found in chapter 1.2 Customer service. Specify the following key data when making enquiries or ordering spare parts:

- Device type
- item number
- Position number
- year of construction
- quantity
- desired shipping method (mail, freight, sea, air, express)
- shipping address

Orders for spare parts without the above information cannot be considered. In the absence of information on the type of dispatch, the dispatch shall be at the discretion of the supplier.

Information on the device type, article number and year of manufacture can be found on the nameplate attached to the device.

### Example

It must be ordered the carrier for the transport rollers.

- Type of device: **TR 3**
- Item number: **6193030**
- Position number: **01**

The order number is: **0-6193030-01**

The order number consists of the article number, the position number and a digit before the Item number.

- Place the digit 0 in front of the item No.
- Also place the digit 0 in front of the position No 1 through 9.

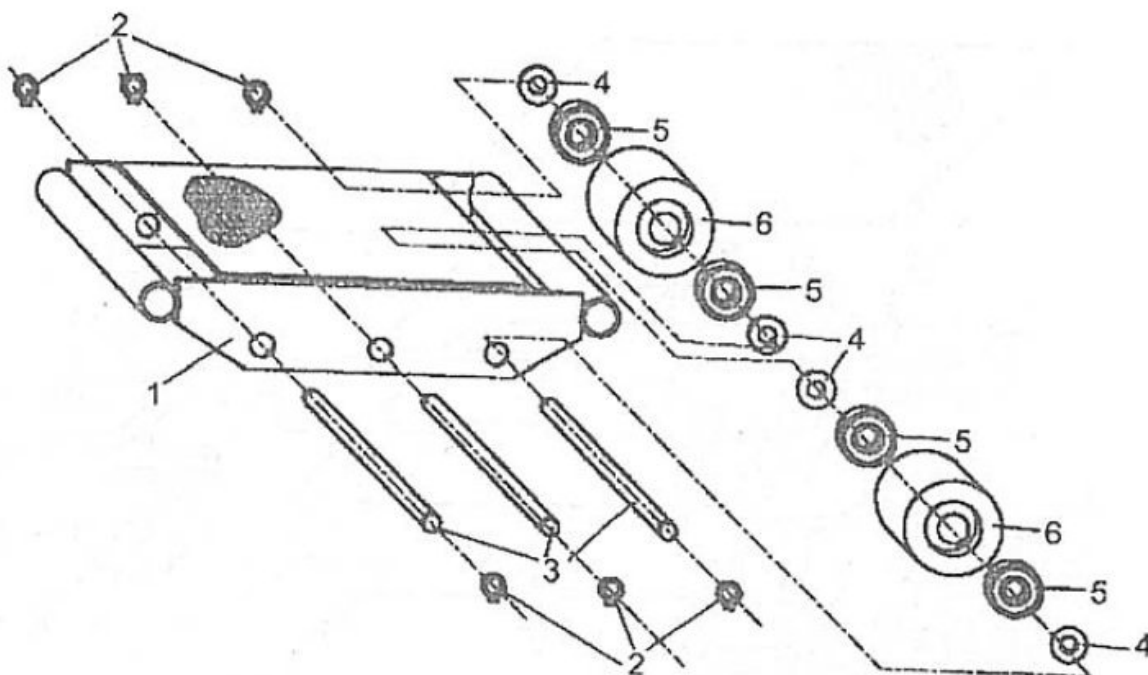
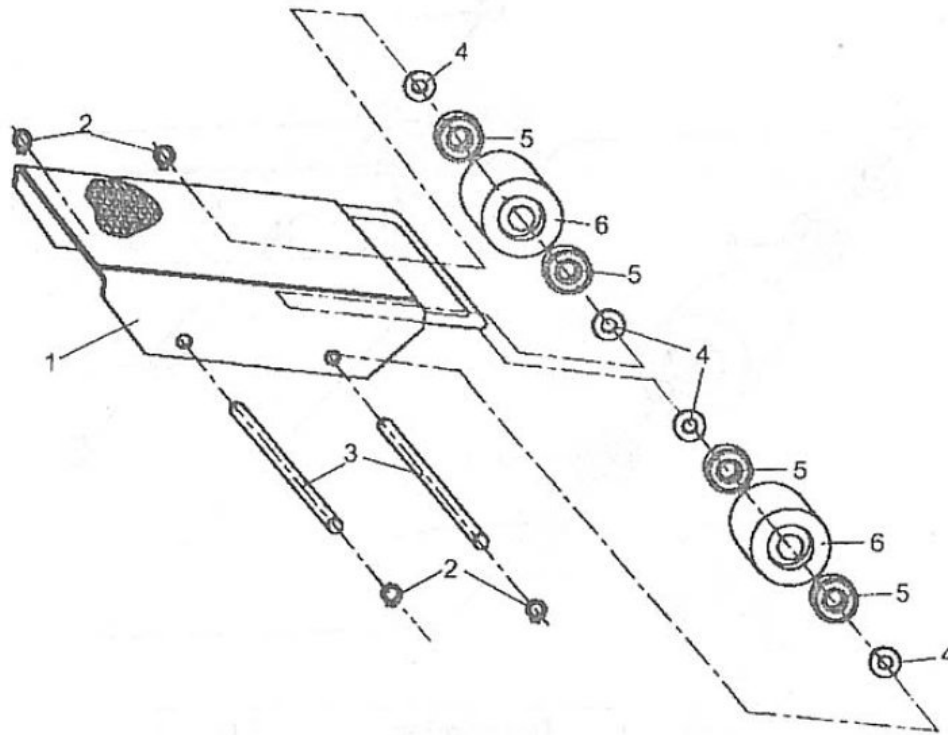
#### The Item number of your device:

Transport roller TR 3:	<b>6193030</b>
Transport roller TR 6:	<b>6193060</b>
Transport roller TF 20 Set:	<b>6195020</b>
Transport roller VTR 6:	<b>6192060</b>
Transport roller VTR 12:	<b>6192120</b>
Transport chassis TF 3:	<b>6191030</b>
Transport chassis TF 6:	<b>6191060</b>
Transport chassis TF 12:	<b>6191120</b>

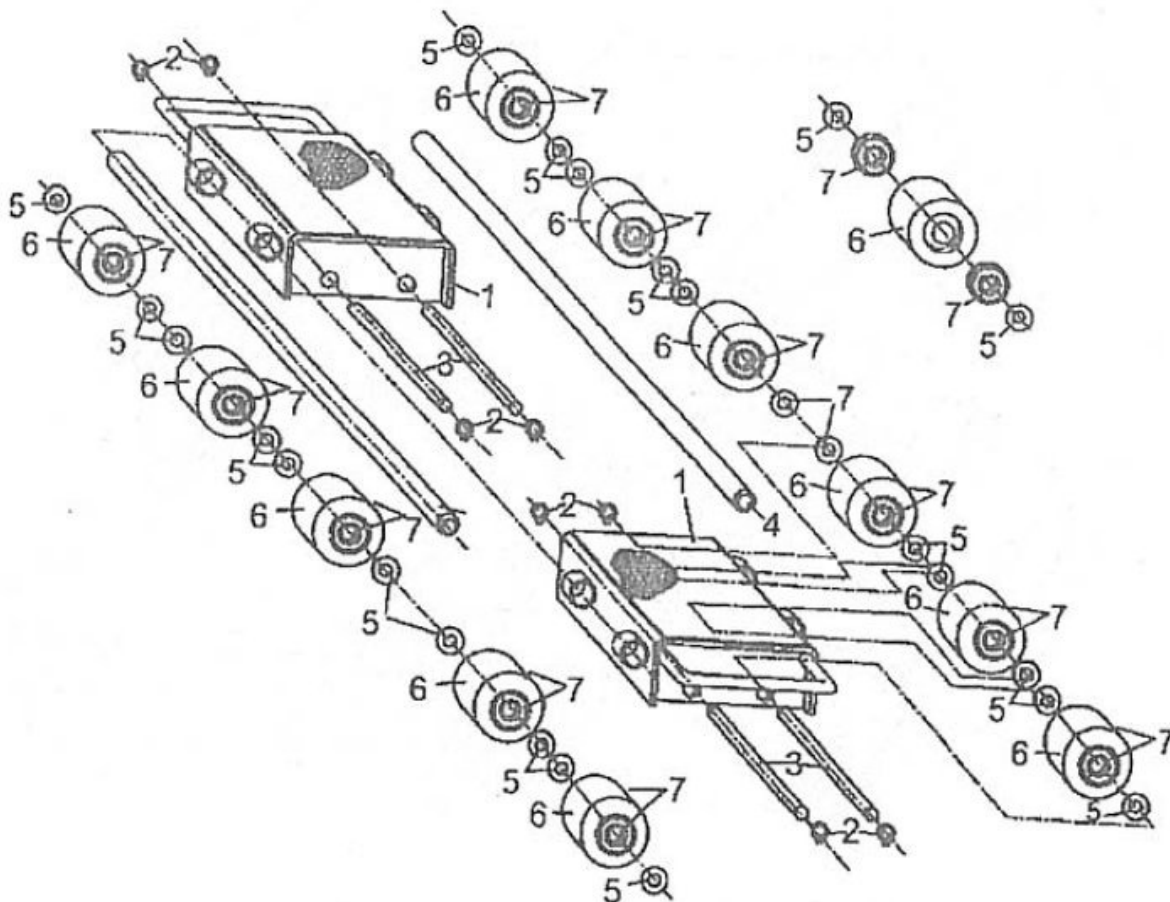
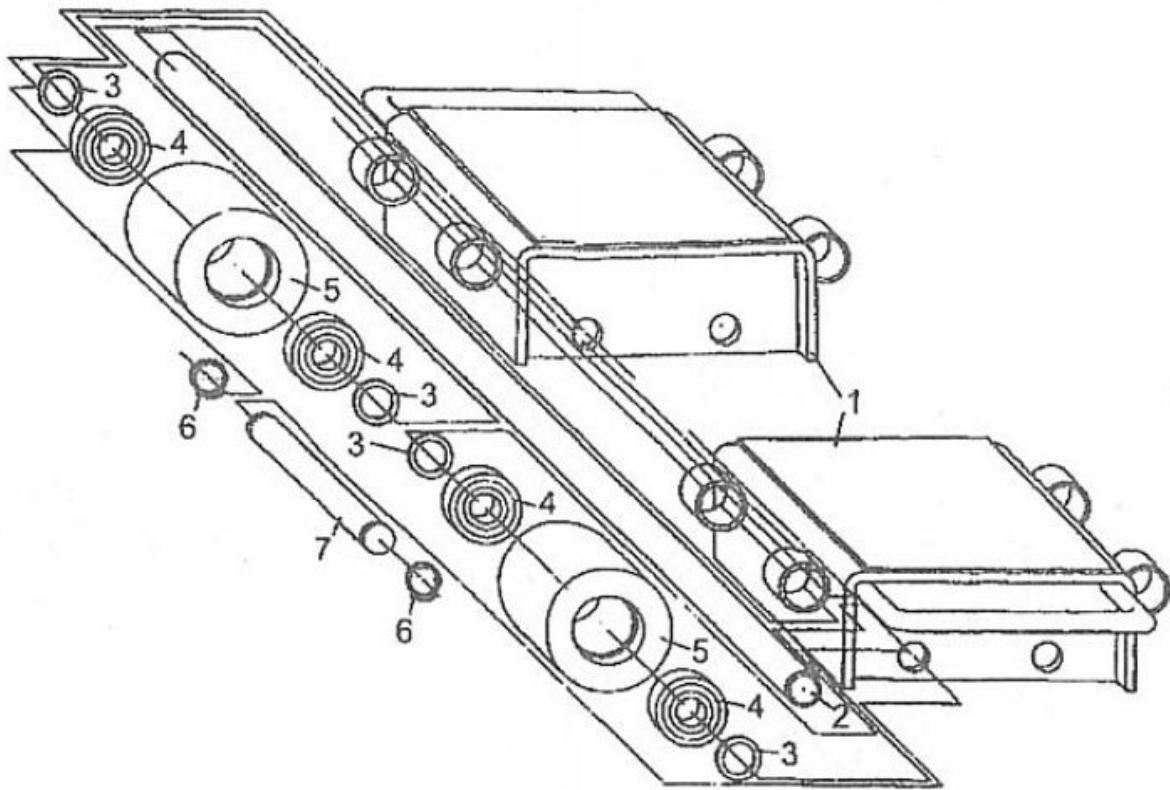
## 11 Spare parts drawings

### 11.1 Spare parts drawing TR 3 (above) TR 6 (below)

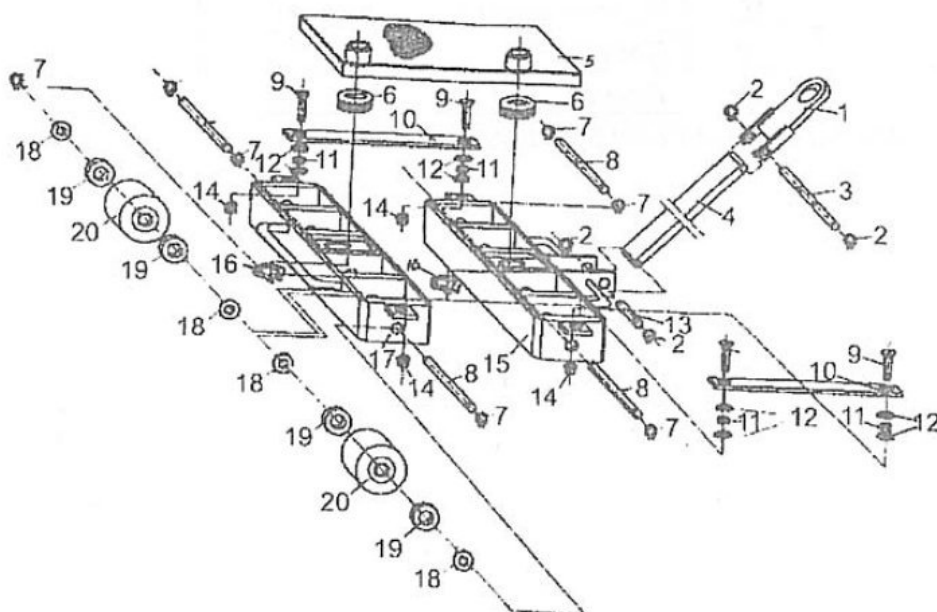
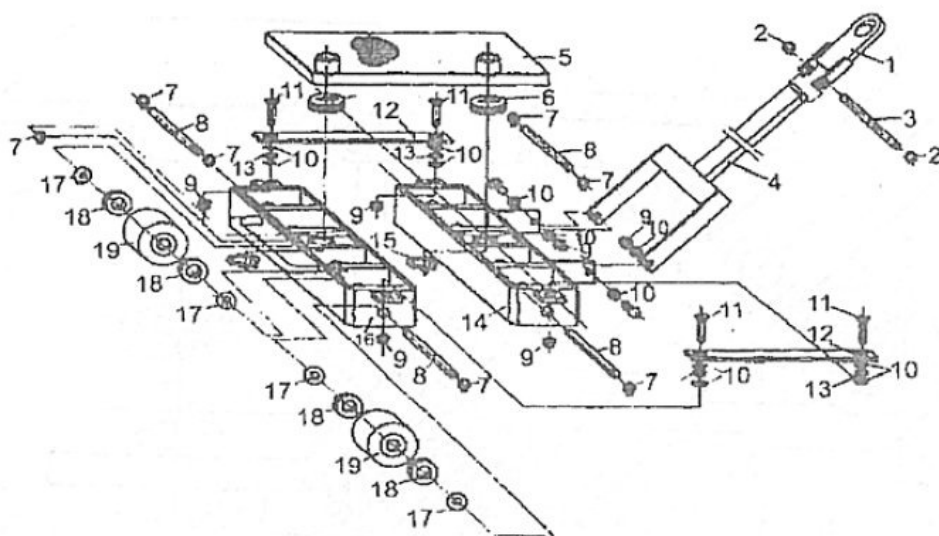
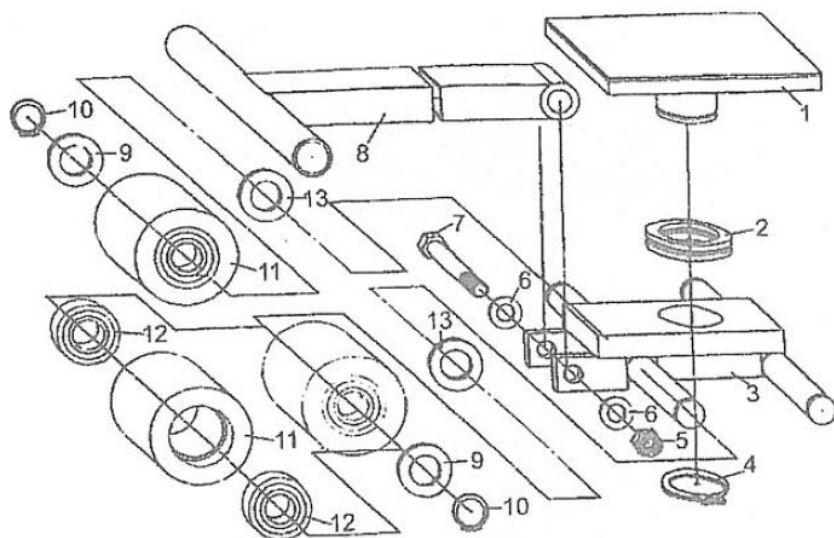
In case of service, the following drawing shall help to identify the necessary spare parts. If necessary, send a copy of the parts drawing with the marked components to your authorised dealer.



## 11.2 Spare parts drawing VTR 6 (above) VTR 12 (below)



11.3 Spare parts drawing TF 3 (above), TF 6 (middle), TF 12 (below)





## 11.4 Spare parts drawing TR 20 Set

